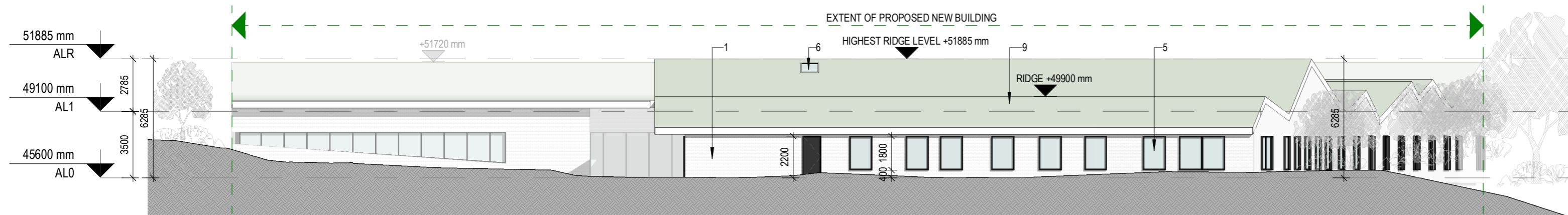
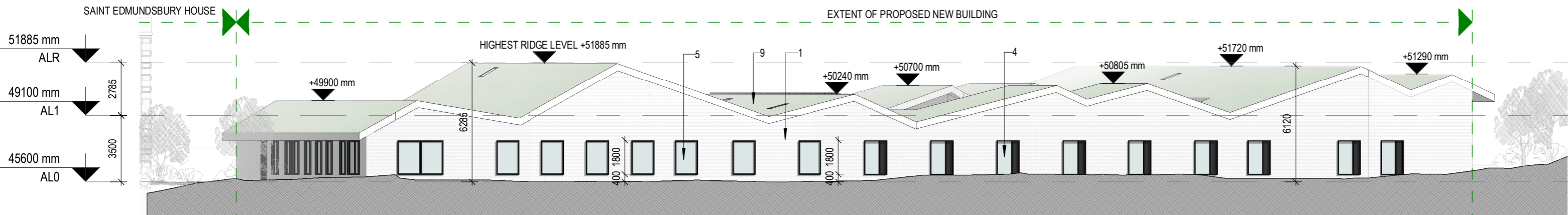


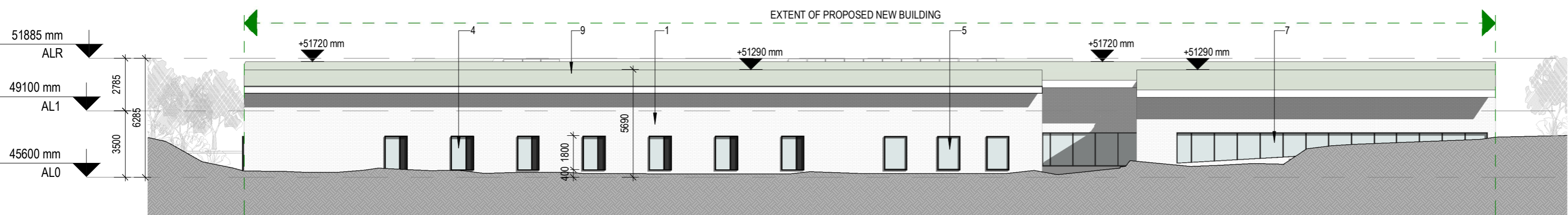
1 Elevation East  
4501 Scale: 1 : 200



2 Elevation - North  
4501 Scale: 1 : 200



3 Elevation - West  
4501 Scale: 1 : 200



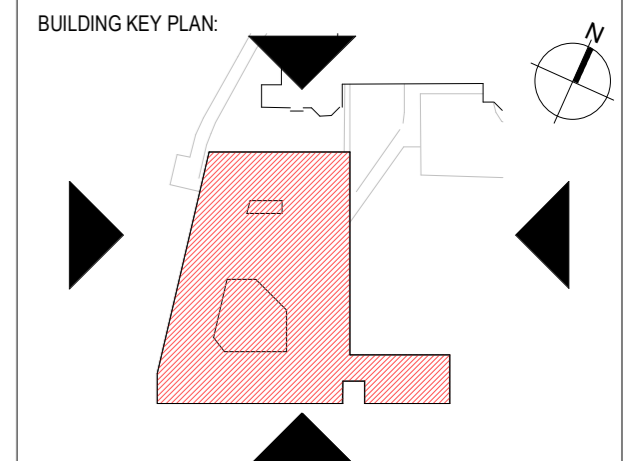
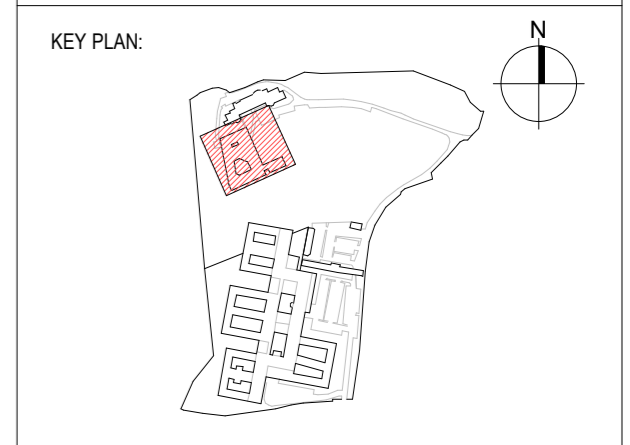
4 Elevation - South  
4501 Scale: 1 : 200

Material Legend	
No	Description
1	Select Brick Facing - Light Tone
3	Timber cladding
4	Typical Bedroom Window Double Glazed PPC Aluminium With Fixed Perforated Screen - To Select Colour
5	Typical PPC Double Glazed Aluminium Window
6	Roof Window
7	PPC Double Glazed Aluminium Curtain Wall - To Select Colour
8	PPC Double Glazed Curtain Wall Door - To Select Colour
9	Green roof

**COPYRIGHT:**  
The design and details shown on this drawing are applicable to The Named Project only and may not be, reproduced, modified or relayed in whole or part or be used for any other project or purpose without the prior written permission of TOT Architects with whom copyright resides.

DO NOT SCALE this drawing. Use figured dimensions only. The Contractor is responsible for checking all levels and dimensions on site prior to commencement of works. Any discrepancies are to be referred to the ARCHITECT.

Drawings to be read in conjunction with all other Consultants Drawings & Specifications were relevant. Proprietary items shall be fixed in strict accordance with the Manufacturer's Instructions. Sizes of proprietary items shall be checked with Manufacturer.



REVISIONS:

NO	DATE	REV.	BY	DESCRIPTION
17/04/26	0	LC		ISSUED FOR PLANNING

**TOT ARCHITECTS**

REGISTERED OFFICE  
49 Upper Mount Street  
Dublin 2, D02 FR85, Ireland

T +555 1 705 7800  
W www.totarch.ie  
E info@totarch.ie

CLIENT: SPUH

PROJECT: St. Edmundsbury Hospital  
Lucan

PROJECT STAGE: Planning

DRAWING TITLE: Proposed Adolescent Unit Elevations

DRAWN: JF	CHECKED: LC	APPROVED: DS	DATE: 17/04/2026
--------------	----------------	-----------------	---------------------

JOB NUMBER: 20-77	SHEET SIZE: A2 L	SCALE: 1 : 200
----------------------	---------------------	-------------------

INFORMATION CONTAINER IDENTIFICATION:  
SPMHS - AU - ZZZ - DR - TOT - AR - 4501

ACCEPTANCE CODE: S	PURPOSE CODE: P3	REVISION: 0
-----------------------	---------------------	----------------